

At the heart of everything we do is a commitment to work together to keep children safe. We do this by:

- Highest quality safeguarding arrangements
- Continuously improving practice
- Information sharing, trust and openness between services
- Integration between children and adults safeguarding

Safeguarding Partners (Key Decision Makers)

- Essex County Council
- Essex Integrated Care Board
- Essex Police

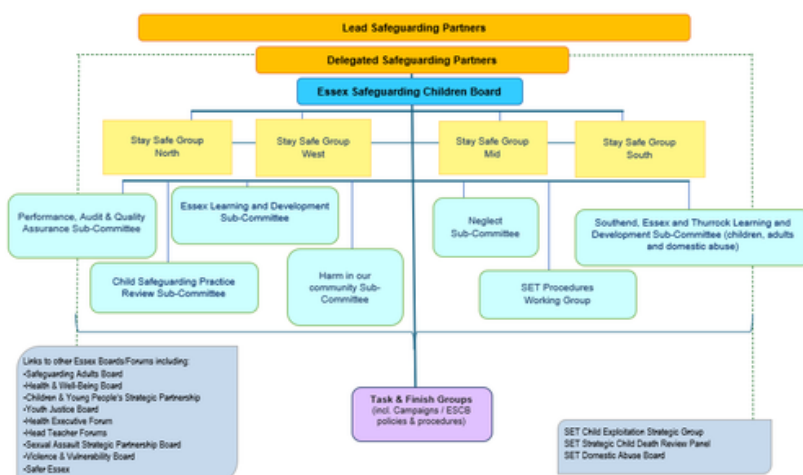


These Safeguarding Partners have joint and equal duties and responsibilities to ensure:

- That agencies work together to safeguard and promote the welfare of all children across Essex.
- Include and develop the role of wider local organisations and agencies in the process.
- They have a clear line of sight in relation to the key and critical safeguarding issues across Essex.

The Lead Safeguarding Partners each nominate a Delegated Safeguarding Partner from their organisation. Details of these can be found in the [MASA Plan](#).

Structure of the ESCB



The work of the Board is carried out by the **sub-committees, stay safe groups and task and finish groups.**

The ESCB does not take safeguarding referrals. If you have a concern about the welfare of a child, contact the Children and Families Hub.

Child Safeguarding Practice Reviews (CSPR)

Reviews help the safeguarding system identify how it can work together better to safeguard children in Essex.

The purpose of a [CSPR](#) is to look at the involvement that organisations and professionals have had with a particular family or child. A CSPR is a review about learning and NOT about fault or blame.

Effective Support in Essex

- [Effective Support for Children and Families in Essex](#)

SET Safeguarding and Child Protection Procedures

- [SET Procedures](#)

Contact details

Email: escb@essex.gov.uk

Website: www.escb.co.uk

