

# ESCB - ONE MINUTE GUIDE

**At the heart of everything we do is a commitment to work together to keep children safe. We do this by:**

- Highest quality safeguarding arrangements
- Continuously improving practice
- Information sharing, trust and openness between services
- Integration between children and adults safeguarding

## Safeguarding Partners (Key Decision Makers)

- Local authority
- Integrated Care Boards
- Police

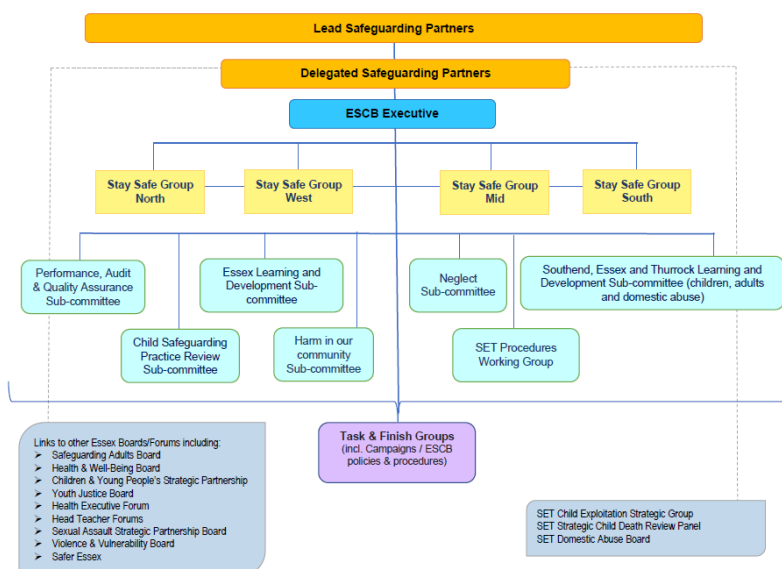


These Safeguarding Partners have joint and equal duties and responsibilities to ensure:

- That agencies work together to safeguard and promote the welfare of all children across Essex.
- Include and develop the role of wider local organisations and agencies in the process.
- They have a clear line of sight in relation to the key and critical safeguarding issues across Essex.

The Lead Safeguarding Partners each nominate a Delegated Safeguarding Partner from their organisation. Details of these can be found in the [MASA Plan](#).

## Structure of the ESCB



## Child Safeguarding Practice Reviews (CSPR)

Reviews help the safeguarding system identify how it can work together better to safeguard children in Essex.

The purpose of a [CSPR](#) is to look at the involvement that organisations and professionals have had with a particular family or child. A CSPR is a review about learning and NOT about fault or blame.

## Effective Support in Essex

- [Effective Support for Children and Families in Essex](#)

## SET Child Protection Procedures

- [SET Procedures](#)

## Contact details

Email: [escb@essex.gov.uk](mailto:escb@essex.gov.uk)

Website: [www.escb.co.uk](http://www.escb.co.uk)

**The ESCB does not take safeguarding referrals. If you have a concern about the welfare of a child, [contact the Children and Families Hub](#).**

