

# MACE Meeting

## Information for young people

### What is MACE?

It is where Senior Managers from many services, hear what is happening for you when you are outside the home and make sure that everyone is doing all they can to make sure you are as safe as you can be.

### What does this mean?

The managers will talk about your Risk in the Community plan from your meeting. Your Social Worker's understanding of what is happening for you.

- When you are out of the home, what are the worries, where the harm may be happening?
- Who is able to help reduce the harm and who is best to work with you?
- What is going well at home and out of the home, that can be supported to increase your safety.

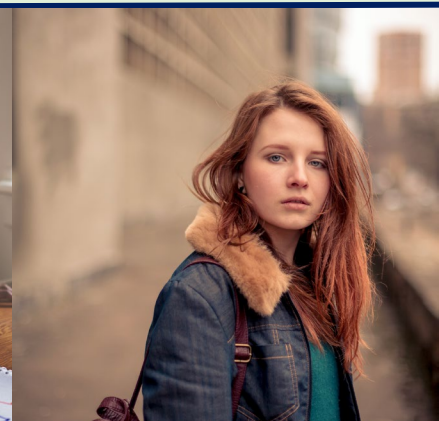
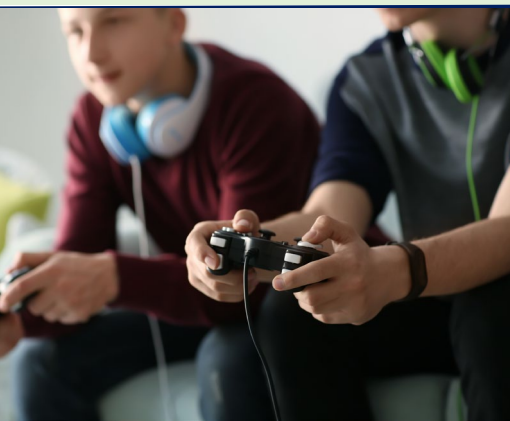
But basically, reviewing what is impacting on you being safe, what is impacting on your wellbeing, what is already working well for you, what we do not understand yet and is there anything else that can be offered to increase your safety.

### Who attends MACE?

People who attend may be:

- Your Social Worker's Manager
- Police Inspectors
- School Nursing / Teacher
- Risk In the Community Practitioner
- Missing Person Liaison – Essex Police
- Children's Society
- Housing
- CAMHS etc

Anyone who is important to you, who you work best with, will be invited. There may be other people who can offer support, and this can include people you may not know but want to help. These will help to form the best support for you.



# MACE Meeting

## Information for young people cont'd

### Before the Meeting

Your Social Worker will share with her manager the plan from your Risk in the Community Meeting. The worries will be given in a clear, easy to explain language so they understand your story.

Other people who come to the meeting will be the managers of professionals who may work with you (head teachers, mentors/support workers etc) and they will already have the plan. They can also bring other ideas with them or any updates since your meeting.

### Who does what in the meeting?

Your Social Worker's manager will share the information from your plan and their understanding of your story. Questions may be asked by other professionals if they do not agree.

Everyone in the meeting is expected to respect each other, talk openly about safety and worries and come together to review the plan that will reduce the harm and risk and increase strength and safety for you when you are out of your home.

### After the meeting – what happens?

After the meeting, if everyone agrees that everything is being done by all services to provide support that aims to reduce the impact and harm of what is happening for you, then the plan will be reviewed again in a couple of months to look at what has changed for you.

If you want to know more, you can go to a website that has lots of information <https://www.escb.co.uk/>  
Your Social Worker will update you on anything that may have been offered that was not in your meeting. This information is yours to know and should be clear and honest.

**Remember, this is to review your plan! It is where managers hear your story and why you should attend your Risk In the Community meeting so you are heard.**