

Distribution of Bruising, Accidental vs Non-Accidental.

Accidental bruises: Once infants start to try to stand and cruise they become prone to small bruises on bony prominences, usually < 1cm. On forehead a bruise in toddlers may be up to 1.5cm. Facial bruises become less common with age and motor competence (see text).

Some rather bald cruisers and early walkers may have a visible scalp bruise.

The eye socket is a common site of inflicted bruise.

The pinna is a common site of inflicted bruising. An extensive bruise suggests the ear has been forcibly gripped.

The soft part of the cheeks are a common site for slap marks and finger-tip imprints from gripping.

Neck area: common site for inflicted bruising which is often petechial.



Are there patterns of bruising in childhood which are diagnostic or suggestive of abuse? A systematic review

S Maguire, M K Mann, J Sibert and A Kemp

Arch. Dis. Child. 2005;90:182-186
doi:10.1136/adc.2003.044065

Source

Clusters of inflicted bruises occur on inner forearm (arm raised in defence) and outer thigh.

Accidental bruises on exposed forearm / elbow area

Active school children can have one or two bruises on the lower back.

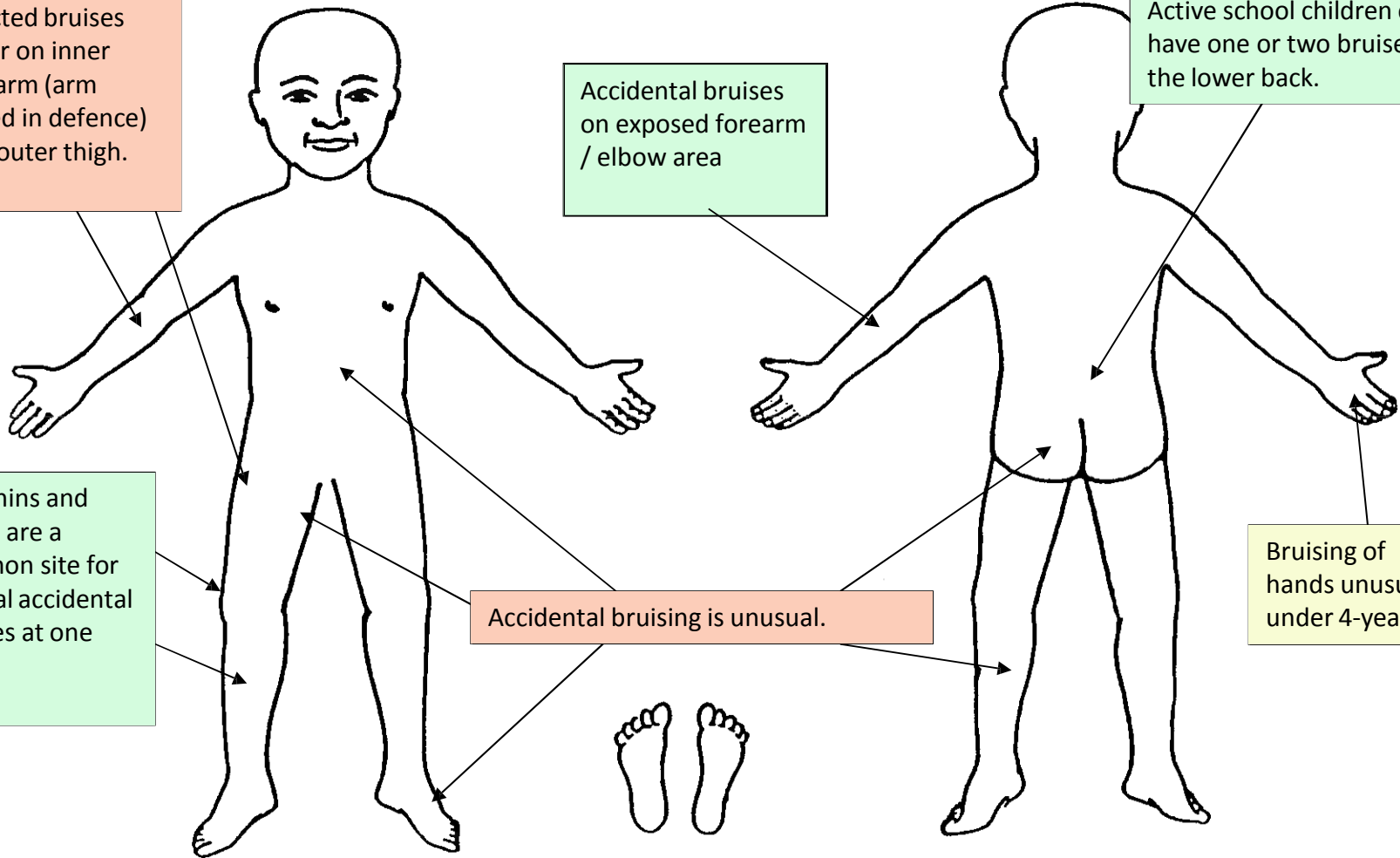
The shins and knees are a common site for several accidental bruises at one time.

Accidental bruising is unusual.

Bruising of hands unusual under 4-years.

Apart from shin / knee area, accidental bruises are usually < 1cm.

Most physically active children have (accidental-type) bruises.





Which injuries may indicate child abuse?

S Maguire

Arch Dis Child Educ Pract Ed 2010 95: 170-177 originally published online October 6, 2010

doi: 10.1136/adc.2009.170431

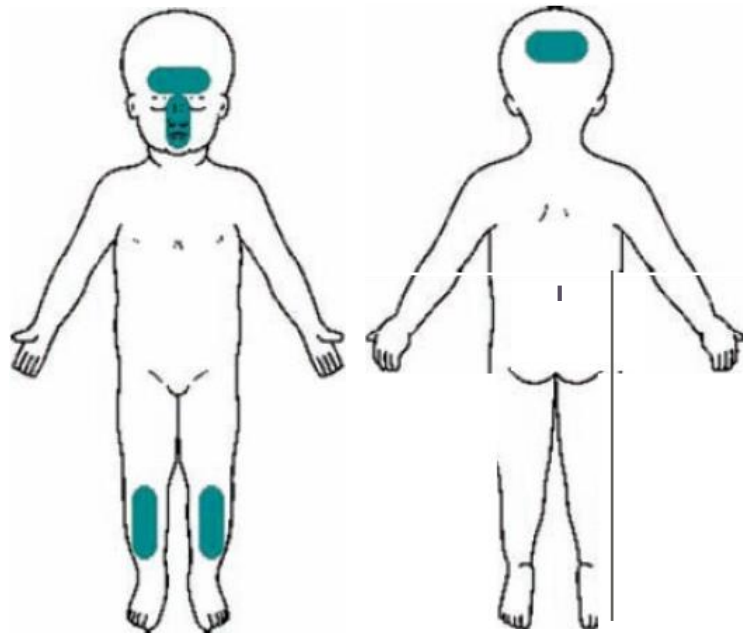


Figure 1 Accidental bruising patterns.

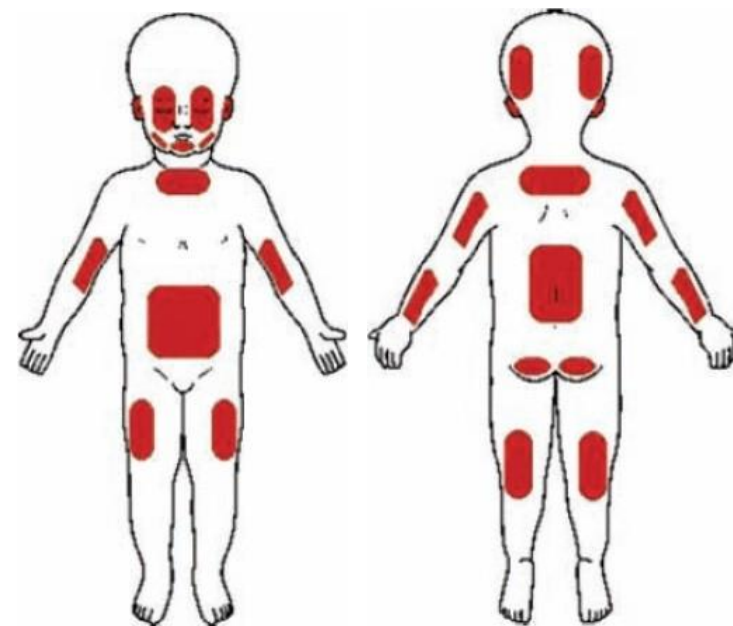


Figure 2 Abusive bruising patterns.

References

This article cites 96 articles, 35 of which can be accessed free at:
<http://ep.bmj.com/content/95/6/170.full.htm#ref-list-1>

From Maguire



Figure 3 Accidental scald pattern.



Figure 4 Abusive scald pattern.

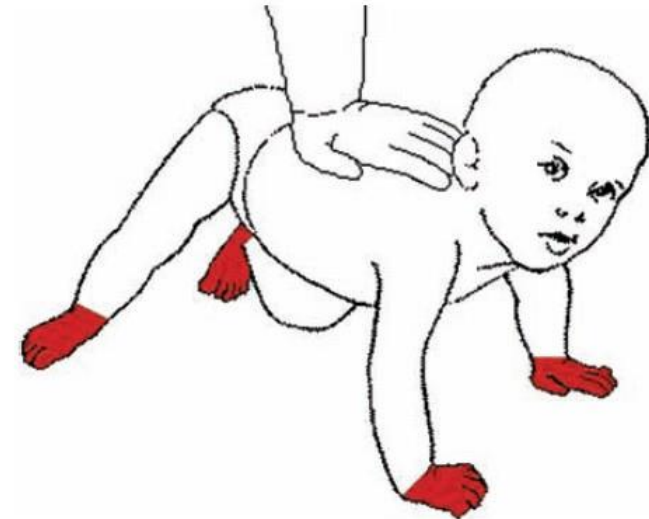


Figure 5 Abusive scald 'glove and stocking' pattern.

Patterns of bruising in preschool children—a longitudinal study

Alison M Kemp,¹ Frank Dunstan,¹ Diane Nuttall,¹ M Hamilton,² Peter Collins,² Sabine Maguire¹

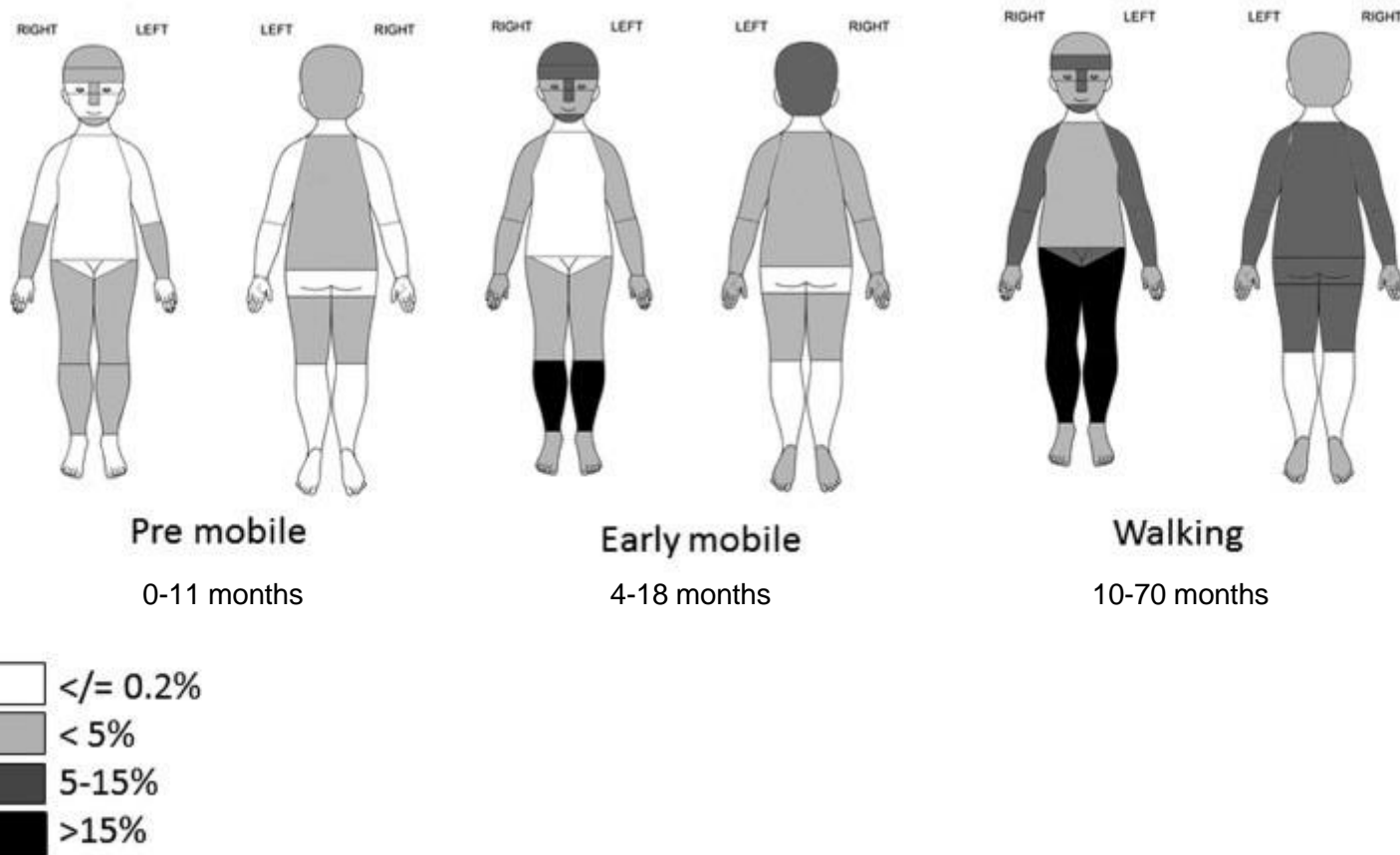


Figure 2 Distribution of percentage of 2570 collections from 328 children with at least one bruise by location and development stage.