

MACE Meeting

Information for parents

What is MACE?

It is where Senior Managers from many services, hear what is happening for your child when they are outside the home and make sure that the plan is as supportive as it can be to reduce harm.

What does this mean?

- The managers will talk about the Risk in the Community plan.
- The Social Worker's understanding of what is happening for your son/daughter.
- When they are out of the home, what are the worries, where the harm may be happening?
- Who is able to help reduce the harm and who is best to work with your son/daughter, family?
- What is going well at home and out of the home, that can be supported to increase their safety.

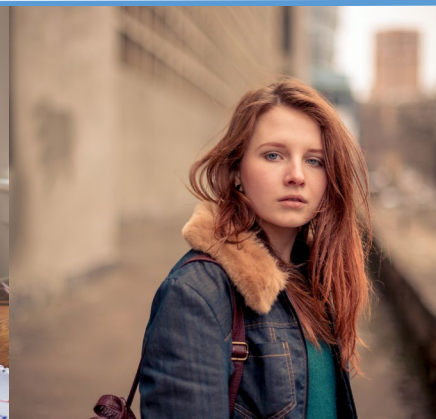
But basically, reviewing what is impacting on your son/daughter being safe, what is impacting on their wellbeing, what is already working well for them, what we do not understand yet and is there anything else that can be offered to increase their safety.

Who attends MACE?

People who attend may be:

- The Social Worker's Manager
- Police Inspectors
- School Nursing / Teacher
- Risk In the Community Practitioner
- Missing Person Liaison – Essex Police
- Children's Society
- Housing
- CAMHS etc

Anyone who is important to your child, who they work best with, will be invited. There may be other people who can offer support, and this can include people you may not know but want to help. These will help to form the best support for your family.



MACE Meeting

Information for parents cont'd

Before the Meeting

The Social Worker will share with her manager the plan from the Risk in the Community Meeting. The worries will be given in clear, easy to explain language, so they understand your story and can share it with managers.

Other people who come to the meeting will be the Managers of professionals who may work with your child (head teachers, mentors/support workers etc) and they will already have know plan. They can also bring other ideas with them or any updates since the RIC meeting.

Who does what in the meeting?

The Team manager will share the information from your plan and their understanding of your story. Questions may be asked by other professionals if they do not understand.

Everyone in the meeting is expected to respect each other, talk openly about safety and worries and come together to review the plan that will reduce the harm and risk and increase strength and safety for your son/daughter when they are out of your home.

After the meeting – what happens?

After the meeting, if everyone agrees that everything is being done by all services to provide support that aims to reduce the impact and harm of what is happening for your son/daughter, then the plan will be reviewed again in a couple of months to look at what has changed for your family.

If you want to know more, you can go to a website that has lots of information <https://www.escb.co.uk/>

Your Social Worker will update you on anything that may have been offered that was not in the RIC meeting. This information is yours to know and should be clear and honest when shared with you.

Remember, this is to review your son/daughter's plan!

It is where managers hear your family's story and why you should attend your Risk In the Community meeting so you are all heard. 😊